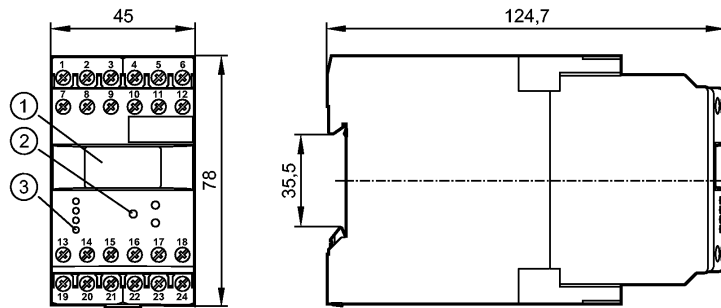


DW2503

MONITOR/FA-1 /100-240VAC/DC

Evaluation systems, power supplies



- 1: OLED display
- 2: Programming buttons
- 3: LEDs



Made in Germany

Product characteristics

MONITOR
FA-1
Housing for DIN rail mounting
programmable
Analogue output
0/4...20 mA; 0...10 V
proportional / antiproportional
averaging
Teach function
integrated pulse monitoring
Key function
1 relay output
1 transistor output

Application

Application	Conversion of pulse sequences into analogue standard signals
-------------	--

Electrical data

Nominal voltage	[V]	110...240 AC (50...60 Hz) / 27 DC (typ. 24 DC)
Voltage tolerance	[%]	-20...+10
Power consumption	[VA]	5

Inputs

Inputs	<p>auxiliary supply: pnp/npn; NAMUR (24 V) auxiliary supply: typ. 24 V DC / 150 mA; short-circuit protected threshold pnp: > 12 V on; < 5 V off threshold npn: > 15 V off; < 8 V on input frequency (max): 15 kHz (corresponds to min. pulse length / space 33 μs)</p>
Derating (auxiliary voltage) [mA/K]	1.5 (> 40 °C)

Outputs

Relay	
Relay outputs	1 changeover contact, floating switching capacity: 6 A (250 V AC); B300, R300
Transistor	
Transistor outputs	1 x pnp; external supply switching voltage/current: 24 V DC / max. 15 mA; short-circuit protected
analogue	



DW2503

MONITOR/FA-1 /100-240VAC/DC

Evaluation systems, power supplies

Analogue outputs	voltage: 0...10 V (max. 10.25 V), load min. 10 kΩ current: 0/4...20 mA (max. 20.5 mA), load max. 500 Ω	
Characteristics	transmission accuracy: ± 0.2 (of the analogue final value) resolution (internal): 12 bits temperature drift: < ± 100 ppm/K	
Measuring / setting range		
Setting range	[pulses/min.]	0...600000 (0.0...10000 Hz)
Environment		
Ambient temperature	[°C]	-40...60
Storage temperature	[°C]	-40...85
Max. relative air humidity	[%]	80 (31 °C), linearly decreasing to 50 % (40 °C)
Protection housing / terminals		IP 50 / IP 20
Tests / approvals		
EMC	EN 61010 EMC 89/336/EEC EN 61000-6-2 EN 61000-6-4	2011 2005 2007
Mechanical data		
Housing materials		plastics
Weight	[kg]	0.362
Displays / operating elements		
Input pulses	LED	yellow
Output status indication	LED	green (lights when the relay is energised / the transistor is closed)
Display		OLED display 128 x 64 dots luminous
Electrical connection		
Connection		dual-chamber terminals 2 x 2.5 mm ² (2 x AWG 14)
Wiring		
<p>1: 24 V DC Supply voltage (L-) 2: 24 V DC Supply voltage (L+) 3: supply transistor outputs (L+) 4: sensor signal pnp 5: DC Sensor supply (L+) 6: DC Sensor supply (L-) 7: AC Supply voltage (L) 8: AC Supply voltage (N) 9: n.c. 10: sensor signal npn 11: Reset pnp 12: transistor output pnp 13: Relay (common) 14: Relay (normally open) 15: Relay (normally closed) 16: n.c. 17: n.c. 18: n.c. 19: n.c. 20: n.c. 21: n.c. 22: analogue output (mA) 23: analogue output (GND) 24: analogue output (V)</p>		
Remarks		
Remarks		overvoltage category II; degree of soiling 2