



ROTECH FOR RELIABILITY!

Why Accept Anything Less?

BRAD® CONNECTIVITY

PE 4000-RS Series

Polypropylene Body

HEAVY DUTY – END OF SHAFT

The PE 4000-RS series of Rotech shaft mounted motion sensors & encoders are manufactured in an extremely tough and durable 30% glass fibre reinforced polypropylene housing as well as being fitted with the Brad® Quick connectivity range of 3 & 4 pin receptacles for easy on site electrical termination.

Installation is simple and easy, just requiring one 12mm threaded hole in the end of the shaft being monitored or fitted using the unique “Mag-Con” magnetic connector as shown below.

A wide range of number of pulses per revolution are available together with AC and DC electrical outputs. Quick connectivity using the standard Brad® Mini – Change® Connectors as shown below.

APPLICATION EXAMPLE:



FOR MONITORING:

- Speed
- Distance
- Direction
- Belt slip
- Shaft stopped
- Underspeed
- Overspeed
- Safety guards interlocking

FEATURES:

- Totally self contained (no guards required)
- Maintenance free for maximum reliability
- 1 to 1000 pulses per revolution
- Environment ingress-IP66
- -25 to +100 deg Celsius versions available



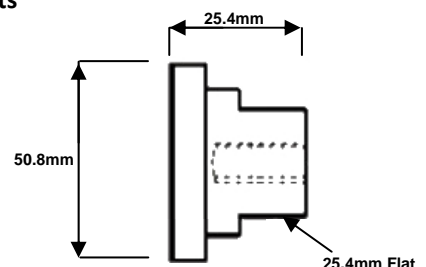
MAG-CON

MAGNETIC SHAFT CONNECTOR

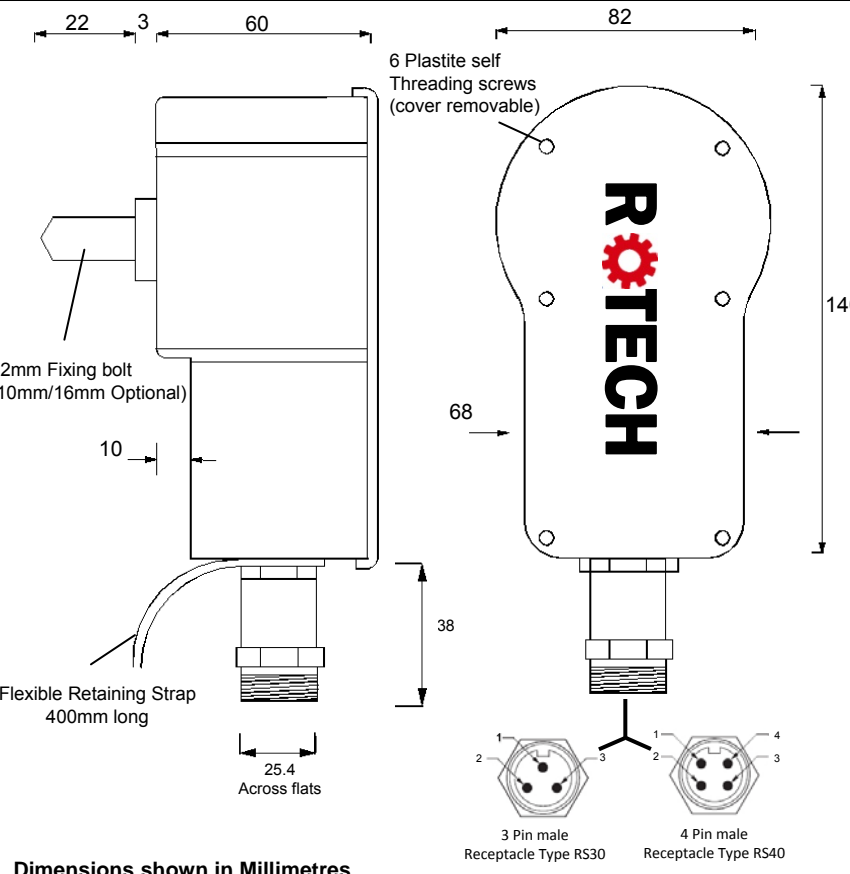
For Quick and Easy Installation of Rotech Shaft Mounted Sensors & Encoders.
Simply attaches to existing shafts

IMPORTANT NOTE:

- MAXIMUM OPERATING SPEED IS 300RPM**
- RECOMMENDED MINIMUM SHAFT DIAMETER FOR FITTING=35MM**



Dimensions/Installation/Electrical Terminations



Dimensions shown in Millimetres

RS30/RS40 Connection options available

Female Chassis/Conduit Plug

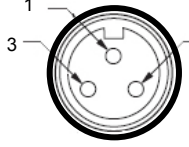


Female Cable Plug

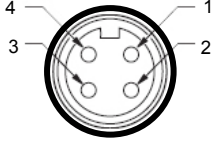


Cable Plug Views

3 Pin Female Connector Type RS30



4 Pin Female Connector Type RS40



Refer to electrical outputs below for pins designation

Cable Cores Identification

- RS30**
1. Black
 2. Brown
 3. Blue

- RS40**
1. Black
 2. Blue
 3. Brown
 4. White

Available Pulse Rates (PPR)
 1,2,4,5,6,8,10,12,16,20,30,32,40,50,60,100,120,180,240,250,300,360,500,1000 (Dependent Upon Output Type)

Electrical Outputs

Type Z (2 Wire Non Polarized) 10-30Vdc **RS30**

Max frequency = 1500Hz

Type E (N.P.N) 10-30Vdc Current sink **RS40**

Max frequency = 600Hz

Type E2 (P.N.P) 10-30Vdc Current source **RS40**

Max frequency = 600Hz

Type E3 (N.P.N + P.N.P - 3 wire) 10-30Vdc Bi-polar - Current sink/source **RS40**

Max frequency = 1000Hz

Type E4 (N.P.N + P.N.P. - 2 Wire) 10-30Vdc Bi-polar - Current sink/source **RS30**

Max frequency = 1300Hz

Type W 20-240V AC/DC 50/60Hz (1 to 30 PPR only) **RS30**

Note
Minimum operating current = 5mA

Max frequency = 25Hz (AC) 1000Hz (DC)

Type N (Namur) 8-2 Vdc (1KΩ) Intrinsically safe circuits **RS30**

Max frequency = 2000Hz

ATEX
 7.5 - 30 Vdc when used outside hazardous areas



Tel : +44 (0)151 356 2322 Website: www.rotechsystems.co.uk
 Fax: +44 (0)151 356 2437 Email: sales@rotechsystems.co.uk

