

### For Rotation Monitoring

The SR 4000 series speed relay modules are intended for use with all Rotech motion sensors, shaft encoders, wheel sensors, vibration sensors and proximity probes to detect if the speed of a rotating shaft rises or falls below a preset level.



#### **FEATURES:**

Dual Ac Supply Standard (Optional - 12/24 Volt Dc)

Easy Setting Of Required Trip/Alarm Speed Directly In Rpm

Extensive range of optional features including automatic start delay (refer to additional information on automatic start delay operation)

Multiple Ranges, Fixed Start Delay, Etc.

Three speed ranges are available on each module. Standard ranges are 1-10 rpm, 1-100rpm and 1-1000 rpm. The required range being selected by link on the terminal rail. Other modules are available with ranges covering the speeds 0.01 rpm to 20,000 rpm.

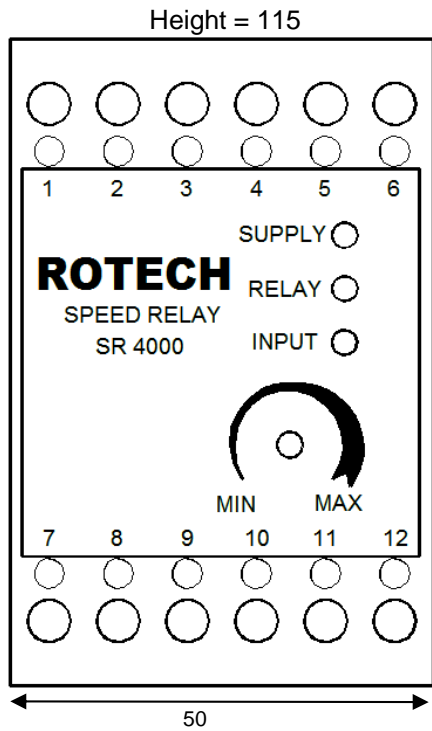
In normal operation the output relay of the module is energised if the speed of the shaft is above the set level and de-energised if speed is below the set level.

Front mounted LED's indicate power on, relay energised, input signal status.

# Dimensions and Installation Information

Shown in millimetres

Connections – DC 2/3 wire sensors



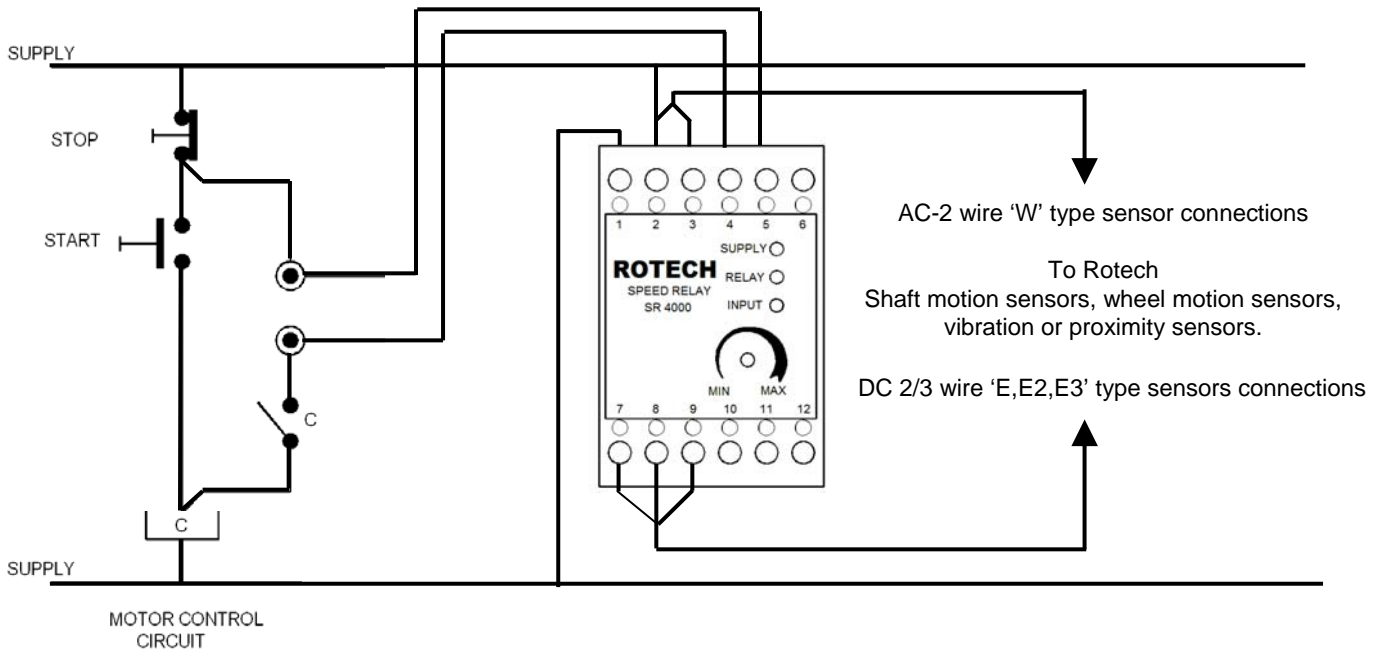
76

1	Neutral	AC mains power supply	1	12/24VDC-Positive
2	110/120V 50/60Hz		2	12/24VDC-Negative
3	220/240V 50/60Hz			DC Power supply
4	N.O.	Output relay rated 5A @ 250VAC / 30VDC		
5	Common			
6	N.C.			
7	0VDC	Blue } 2 Wire Sensors Brown } 3 Wire Sensors		
8	Input			
9	+12 VDC			
10	Range	No links = 0 to 10RPM		
11	Links	Link 10 to 11 = 0 to 100RPM		
12		Link 10 to 12 = 0 to 1000RPM		

Connections – AC 2 wire 'W' type sensors only

1	Neutral	AC mains power supply	Brown	Rotech motion sensor
2	110/120V 50/60Hz			
3	Input – AC 'W' type 2 wire sensor			
4	N.O.	Output relay rated 5A @ 250VAC / 30VDC		
5	Common			
6	N.C.			
7	0VDC			
8	Input			
9	+12 VDC			
10	Range	No links = 0 to 10RPM		
11	Links	Link 10 to 11 = 0 to 100RPM		
12		Link 10 to 12 = 0 to 1000RPM		

Typical installation shown for 110/120 V AC supply



Mounting: DIN 35x7.5mm Rail  
 Environment Ingress: IP50  
 Temperature: -10°C to +70°C

**ROTECH** SYSTEMS

Tel : +44 (0)151 356 2322 Website: [www.rotechsystems.co.uk](http://www.rotechsystems.co.uk)  
 Fax: +44 (0)151 356 2437 Email: [sales@rotechsystems.co.uk](mailto:sales@rotechsystems.co.uk)

